

Student Satisfaction Survey (SSS) (Session: 2019-20)

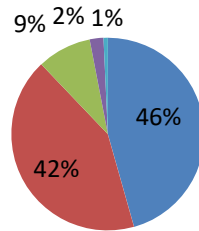
Total Responses: 693

Scale	4	3	2	1	0
Questions	Responses (in %)				
How much of the syllabus was covered in the class?	46	42	9	2	1
How well did the teachers prepare for the classes?	41	57	1	1	0
How well were the teachers able to communicate?	72	22	5	1	0
The teacher's approach to teaching can best be described as	37	48	14	1	0
Fairness of the internal evaluation process by the teachers.	60	32	6	1	1
Was your performance in assignments discussed with you?	61	29	7	2	1
The institute takes active interest in promoting internship, student exchange, field visit opportunities for students.	50	33	14	2	1
The teaching and mentoring process in your institution facilitates you in cognitive, social and emotional growth.	40	48	10	1	1
The institution provides multiple opportunities to learn and grow.	45	50	5	0	0
Teachers inform you about your expected competencies, course outcomes and programme outcomes.	67	26	5	1	1
Your mentor does a necessary follow-up with an assigned task to you.	60	32	6	1	1
The teacher illustrates the concepts through examples and applications	68	26	4	2	0
The teacher identify your strengths and encourage you with providing right level of challenges.	63	28	5	3	1
Teachers are able to identify your weaknesses and help you to overcome them.	63	26	6	3	2
The institution makes efforts to engage students in the monitoring, review and continuous quality improvement of the teaching learning process.	41	52	6	1	0

The institute/ teachers use student centric methods, such as experimental learning, participative learning and problem solving methodologies for enhancing learning experiences.	53	41	4	2	0
Teachers encourage you to participate in extracurricular activities.	57	39	3	1	0
Efforts are made by the institute/ teachers to inculcate soft skills, life skills and employability skills to make you ready for the world of work.	55	37	5	2	1
What percentage of teachers use ICT tools such as LCD projector, Multimedia, etc. while teaching.	24	41	20	9	6
The overall quality of teaching-learning process in your institute is very good.	48	48	3	1	0

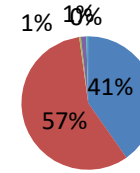
How much of the syllabus was covered in the class?

- 4- 85 to 100%
- 3- 70 to 84%
- 2- 55 to 69%
- 1- 30 to 54%
- 0- Below 30%



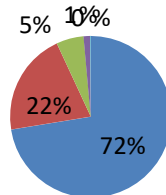
How well did the teachers prepare for the classes?

- 4- Thoroughly
- 3- Satisfactorily
- 2- Poorly
- 1- Indifferently
- 0- Won't teach at all



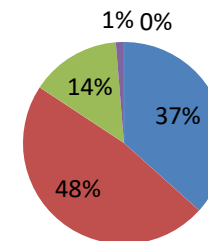
How well were the teachers able to communicate?

- 4- Always effective
- 3- Sometimes effective
- 2- Just satisfactorily
- 1- Generally ineffective
- 0- Very poor communication



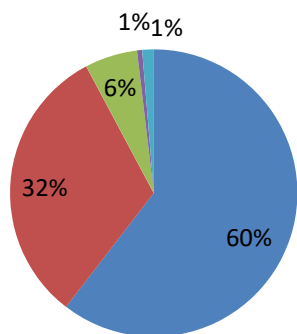
The teacher's approach to teaching can best be described as

- 4- Excellent
- 3- Very good
- 2- Good
- 1- Fair
- 0- Poor



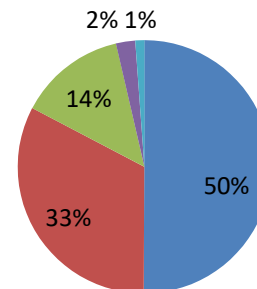
Fairness of the internal evaluation process by the teachers.

- 4- Always Fair ■ 3- Usually fair ■ 2- Sometimes fair
- 1- Usually unfair ■ 0- Unfair



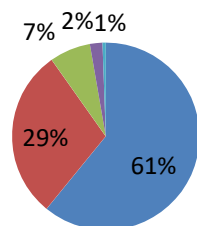
The institute takes active interest in promoting internship, student exchange, field visit opportunities for students.

- 4- Regularly ■ 3- Often ■ 2- Sometimes
- 1- Rarely ■ 0- Never



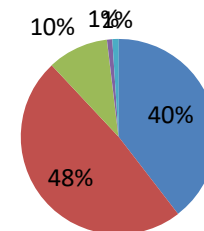
Was your performance in assignments discussed with you?

- 4- Every time ■ 3- Usually
- 2- Occasionally/Sometimes ■ 1- Rarely
- 0- Never



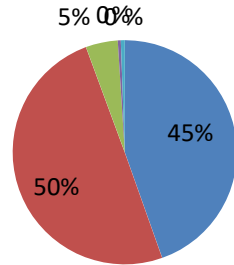
The teaching and mentoring process in your institution facilitates you in cognitive, social and emotional growth.

- 4- Significantly ■ 3- Very well ■ 2- Moderately
- 1- Marginally ■ 0- Not at all



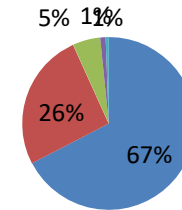
The institution provides multiple opportunities to learn and grow.

- 4- Strongly agree
- 3- Agree
- 2- Neutral
- 1- Disagree
- 0- Strongly Disagree



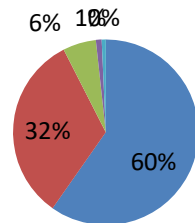
Teachers inform you about your expected competencies, course outcomes and programme outcomes.

- 4- Every time
- 3- Usually
- 2- Occasionally/Sometimes
- 1- Rarely
- 0- Never



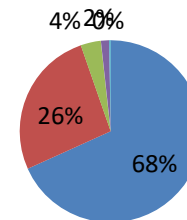
Your mentor does a necessary follow-up with an assigned task to you.

- 4- Every time
- 3- Usually
- 2- Occasionally/Sometimes
- 1- Rarely
- 0- I don't have a mentor



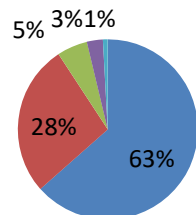
The teacher illustrates the concepts through examples and applications

- 4- Every time
- 3- Usually
- 2- Occasionally/Sometimes
- 1- Rarely
- 0- Never



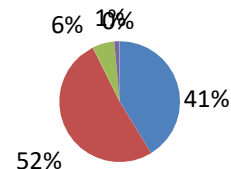
The teacher identify your strengths and encourage you with providing right level of challenges.

■ 4- Fully ■ 3- Reasonably ■ 2- Partially
 ■ 1- Slightly ■ 0- Unable to



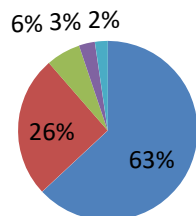
The institution makes efforts to engage students in the monitoring, review and continuous quality improvement of the teaching learning process.

■ 4- Strongly agree ■ 3- Agree
 ■ 2- Neutral ■ 1- Disagree
 ■ 0- Strongly disagree



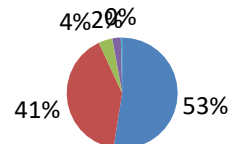
Teachers are able to identify your weaknesses and help you to overcome them.

■ 4- Every time ■ 3- Usually
 ■ 2- Occasionally/Sometimes ■ 1- Rarely
 ■ 0- Never



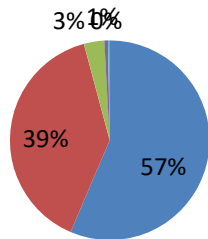
The institute/ teachers use student centric methods, such as experimental learning, participative learning and problem solving methodologies for enhancing learning experiences.

■ 4- To a great extent ■ 3- Moderate
 ■ 2- Some what ■ 1- Very little
 ■ 0- Not at all



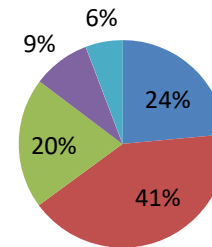
Teachers encourage you to participate in extracurricular activities.

- 4- Strongly agree
- 3- Agree
- 2- Neutral
- 1- Disagree
- 0- Strongly disagree



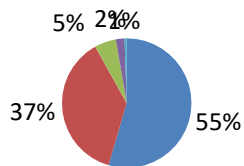
What percentage of teachers use ICT tools such as LCD projector, Multimedia, etc. while teaching.

- 4- Above 90 %
- 3- 70 - 89%
- 2- 50 - 69%
- 1- 30 - 49%
- 0- Below 29%



Efforts are made by the institute/ teachers to inculcate soft skills, life skills and employability skills to make you ready for the world of work.

- 4- To a great extent
- 3- Moderate
- 2- Some what
- 1- Very little
- 0- Not at all



The overall quality of teaching-learning process in your institute is very good.

- 4- Strongly agree
- 3- Agree
- 2- Neutral
- 1- Disagree
- 0- Strongly disagree

