

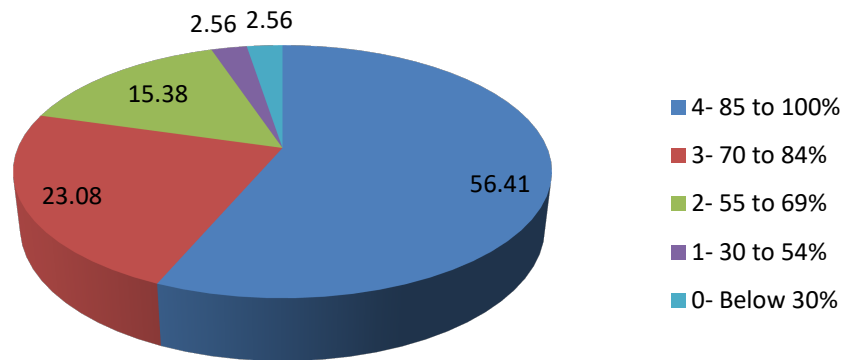
**Student Satisfaction Survey (SSS) (Session -2023-24)****Total Responses- 78**

	<b>4</b>	<b>3</b>	<b>2</b>	<b>1</b>	<b>0</b>
	<b>Responses in %</b>	<b>Responses in %</b>	<b>Responses in %</b>	<b>Responses in %</b>	<b>Responses in %</b>
<b>1. How much of the syllabus was covered in the class?</b>	<b>56.41</b>	<b>23.08</b>	<b>15.38</b>	<b>2.56</b>	<b>2.56</b>
<b>2. How well did the teachers prepare for the classes?</b>	<b>43.59</b>	<b>44.87</b>	<b>6.41</b>	<b>2.56</b>	<b>2.56</b>
<b>3. How well were the teachers able to communicate?</b>	<b>50.00</b>	<b>28.21</b>	<b>16.67</b>	<b>2.56</b>	<b>2.56</b>
<b>4. The teacher's approach to teaching can best be described as.</b>	<b>37.18</b>	<b>32.05</b>	<b>21.79</b>	<b>6.41</b>	<b>2.56</b>
<b>5. Fairness of the internal evaluation process by the teachers.</b>	<b>38.46</b>	<b>35.90</b>	<b>20.51</b>	<b>2.56</b>	<b>2.56</b>
<b>6. Was your performance in assignments discussed with you?</b>	<b>37.18</b>	<b>47.44</b>	<b>3.85</b>	<b>5.13</b>	<b>6.41</b>

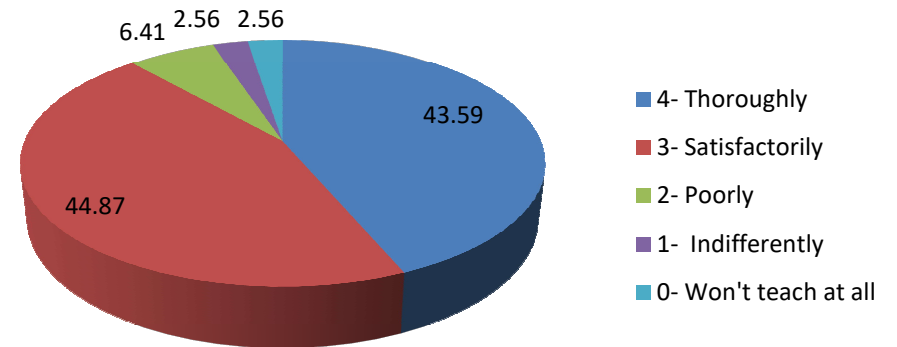
<b>7. The institute takes active interest in promoting internship, student exchange, field visit opportunities for students.</b>	<b>28.21</b>	<b>41.03</b>	<b>15.38</b>	<b>7.69</b>	<b>7.69</b>
<b>8. The teaching and mentoring process in your institution facilitates you in cognitive, social and emotional growth.</b>	<b>30.77</b>	<b>38.46</b>	<b>20.51</b>	<b>6.41</b>	<b>3.85</b>
<b>9. The institution provides multiple opportunities to learn and grow.</b>	<b>28.21</b>	<b>42.31</b>	<b>21.79</b>	<b>0.00</b>	<b>7.69</b>
<b>10. Teachers inform you about your expected competencies, course outcomes and programme outcomes.</b>	<b>46.15</b>	<b>26.92</b>	<b>19.23</b>	<b>3.85</b>	<b>3.85</b>
<b>11. Your mentor does a necessary follow-up with an assigned task to you.</b>	<b>38.46</b>	<b>33.33</b>	<b>17.95</b>	<b>5.13</b>	<b>5.13</b>
<b>12. The teacher illustrates the concepts through examples and applications</b>	<b>37.18</b>	<b>33.33</b>	<b>21.79</b>	<b>3.85</b>	<b>3.85</b>
<b>13. The teacher identify your strengths and encourage you with providing right level of challenges.</b>	<b>38.46</b>	<b>32.05</b>	<b>19.23</b>	<b>3.85</b>	<b>6.41</b>
<b>14. Teachers are able to identify your weaknesses and help you to overcome them.</b>	<b>41.03</b>	<b>32.05</b>	<b>15.38</b>	<b>7.69</b>	<b>3.85</b>
<b>15. The institution makes efforts to engage students in the monitoring, review and continuous quality improvement of the teaching learning process.</b>	<b>28.21</b>	<b>33.33</b>	<b>30.77</b>	<b>3.85</b>	<b>3.85</b>

<b>16. The institute/ teachers use student centric methods, such as experimental learning, participative learning and problem solving methodologies for enhancing learning experiences.</b>	<b>42.31</b>	<b>28.21</b>	<b>16.67</b>	<b>7.69</b>	<b>5.13</b>
<b>17. Teachers encourage you to participate in extracurricular activities.</b>	<b>37.18</b>	<b>41.03</b>	<b>15.38</b>	<b>2.56</b>	<b>3.85</b>
<b>18. Efforts are made by the institute/ teachers to inculcate soft skills, life skills and employability skills to make you ready for the world of work.</b>	<b>33.33</b>	<b>30.77</b>	<b>24.36</b>	<b>5.13</b>	<b>6.41</b>
<b>19. What percentage of teachers use ICT tools such as LCD projector, Multimedia, etc. while teaching.</b>	<b>20.51</b>	<b>41.03</b>	<b>16.67</b>	<b>11.54</b>	<b>10.26</b>
<b>20. The overall quality of teaching-learning process in your institute is very good.</b>	<b>34.62</b>	<b>30.77</b>	<b>25.64</b>	<b>5.13</b>	<b>3.85</b>

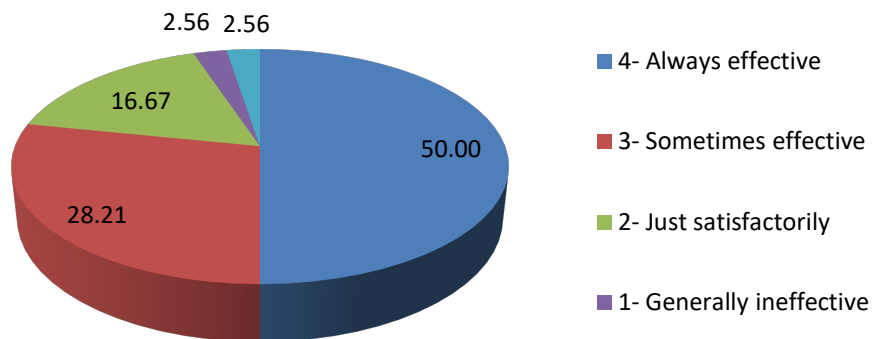
### 1. How much of the syllabus was covered in the class?



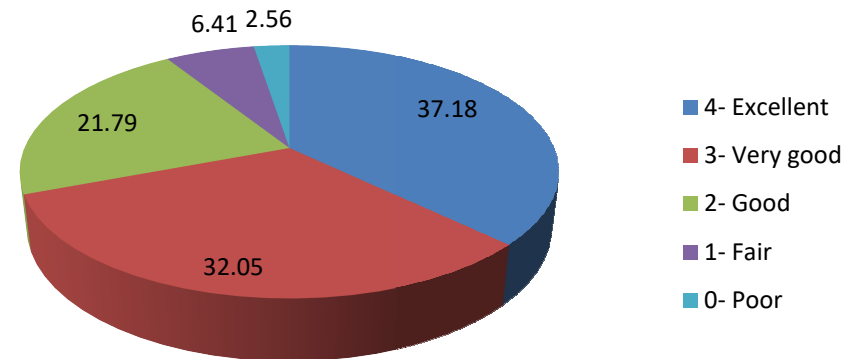
### 2. How well did the teachers prepare for the classes?



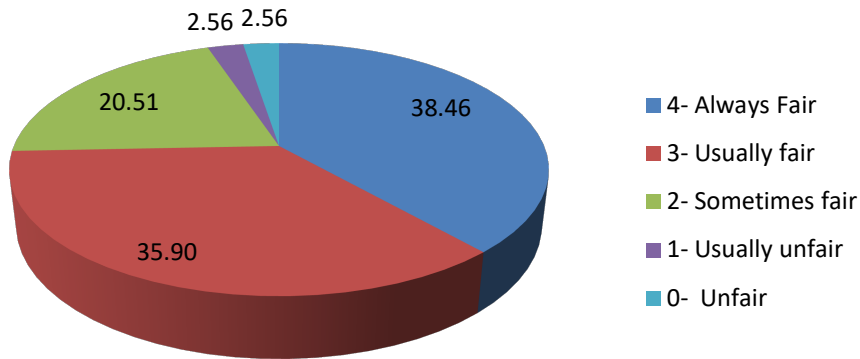
### 3. How well were the teachers able to communicate?



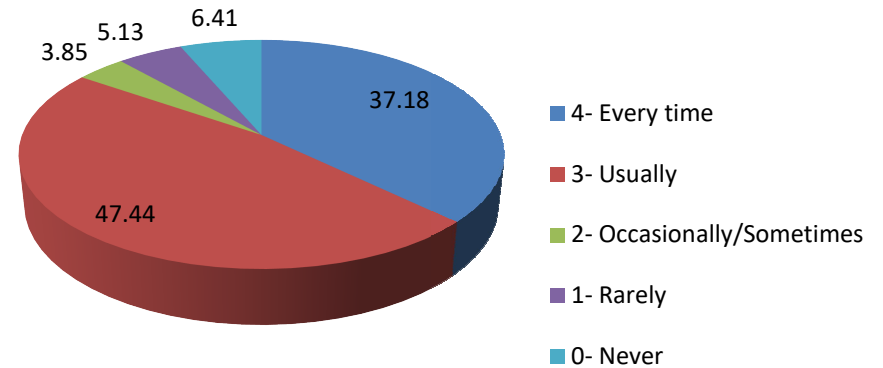
### 4. The teacher's approach to teaching can best be described as.



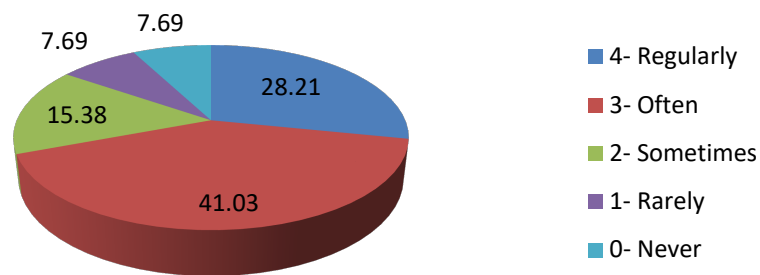
### 5. Fairness of the internal evaluation process by the teachers.



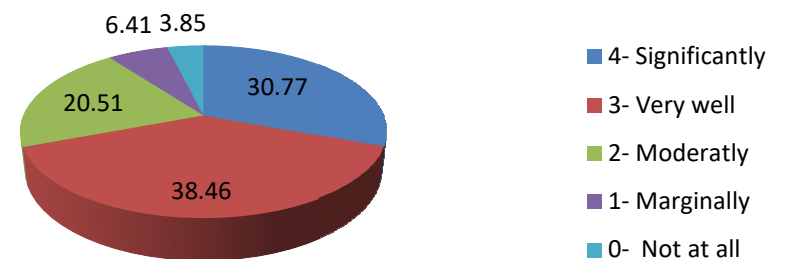
### 6. Was your performance in assignments discussed with you?



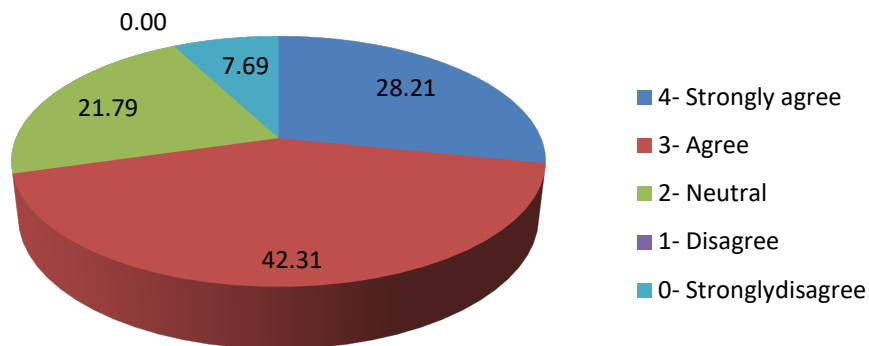
### 7. The institute takes active interest in promoting internship, student exchange, field visit opportunities for students.



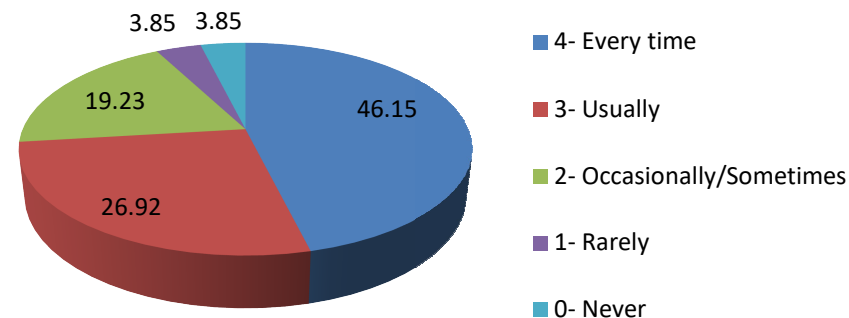
### 8. The teaching and mentoring process in your institution facilitates you in cognitive, social and emotional growth.



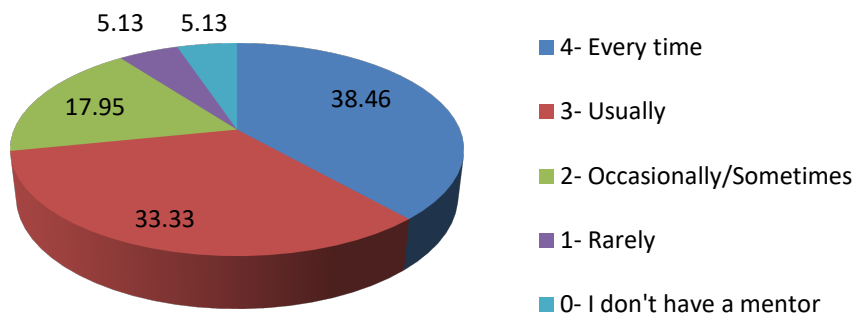
**9. The institution provides multiple opportunities to learn and grow.**



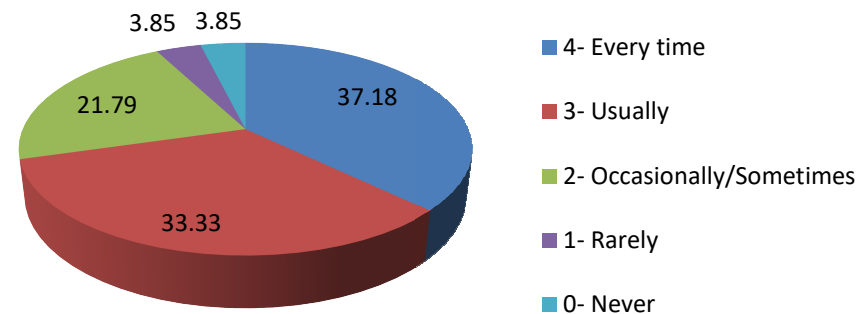
**10. Teachers inform you about your expected competencies, course outcomes and programme outcomes.**



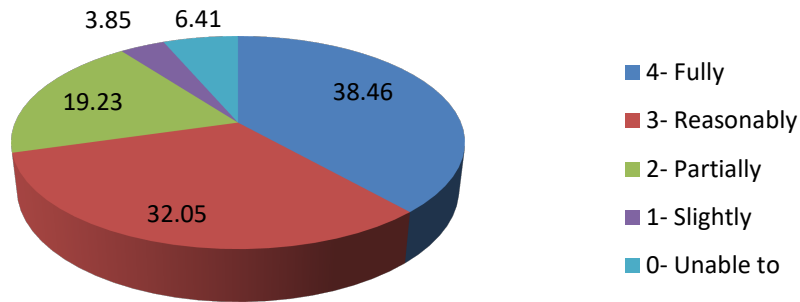
**11. Your mentor does a necessary follow-up with an assigned task to you.**



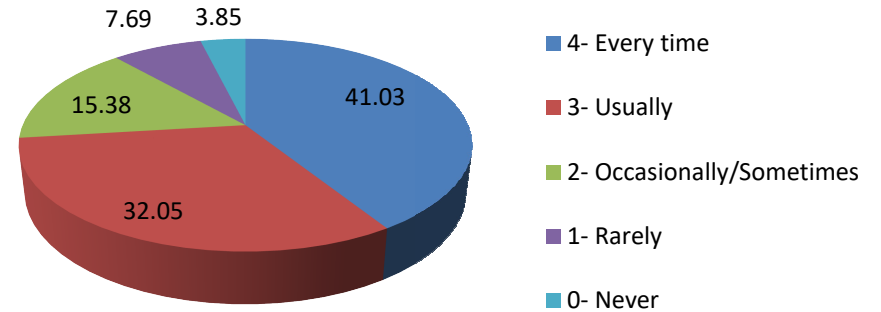
**12. The teacher illustrates the concepts through examples and applications**



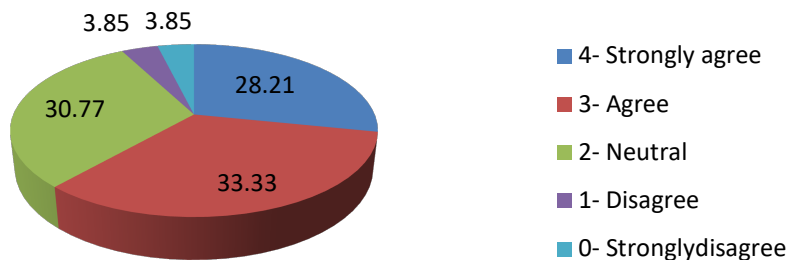
**13. The teacher identify your strengths and encourage you with providing right level of challenges.**



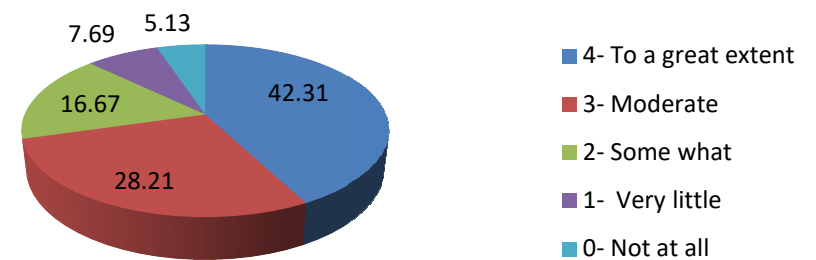
**14. Teachers are able to identify your weaknesses and help you to overcome them.**



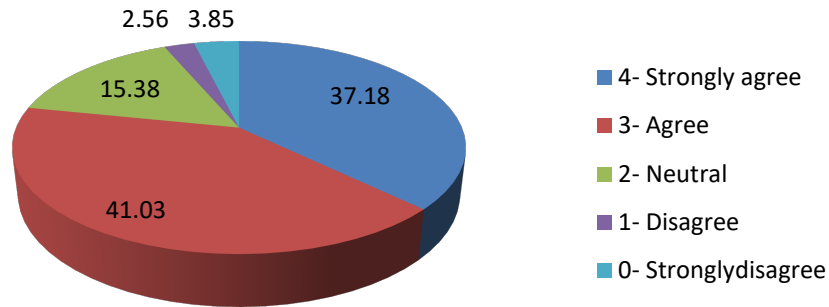
**15. The institution makes efforts to engage students in the monitoring, review and continuous quality improvement of the...**



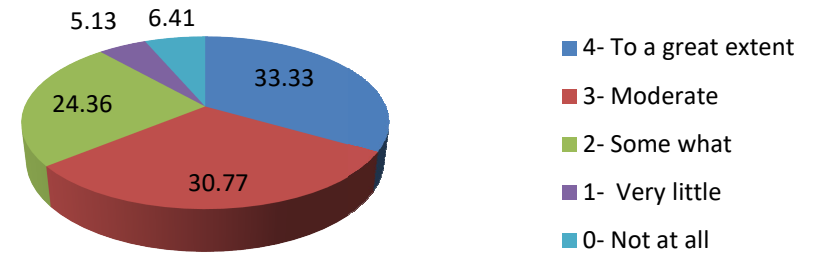
**16. The institute/ teachers use student centric methods, such as experimental learning, participative learning and problem solving...**



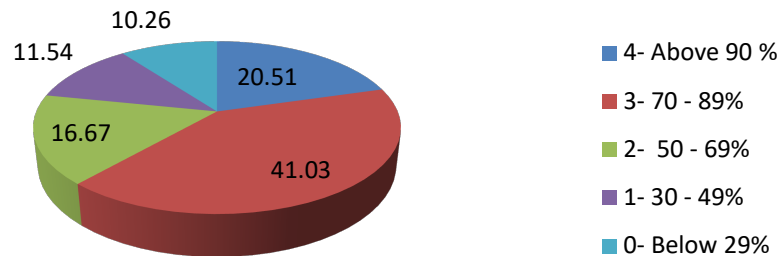
**17. Teachers encourage you to participate in extracurricular activities.**



**18. Efforts are made by the institute/ teachers to inculcate soft skills, life skills and employability skills to make you ready for the world of work.**



**19. What percentage of teachers use ICT tools such as LCD projector, Multimedia, etc. while teaching.**



**20. The overall quality of teaching-learning process in your institute is very good.**

